

163036

1

12. 15

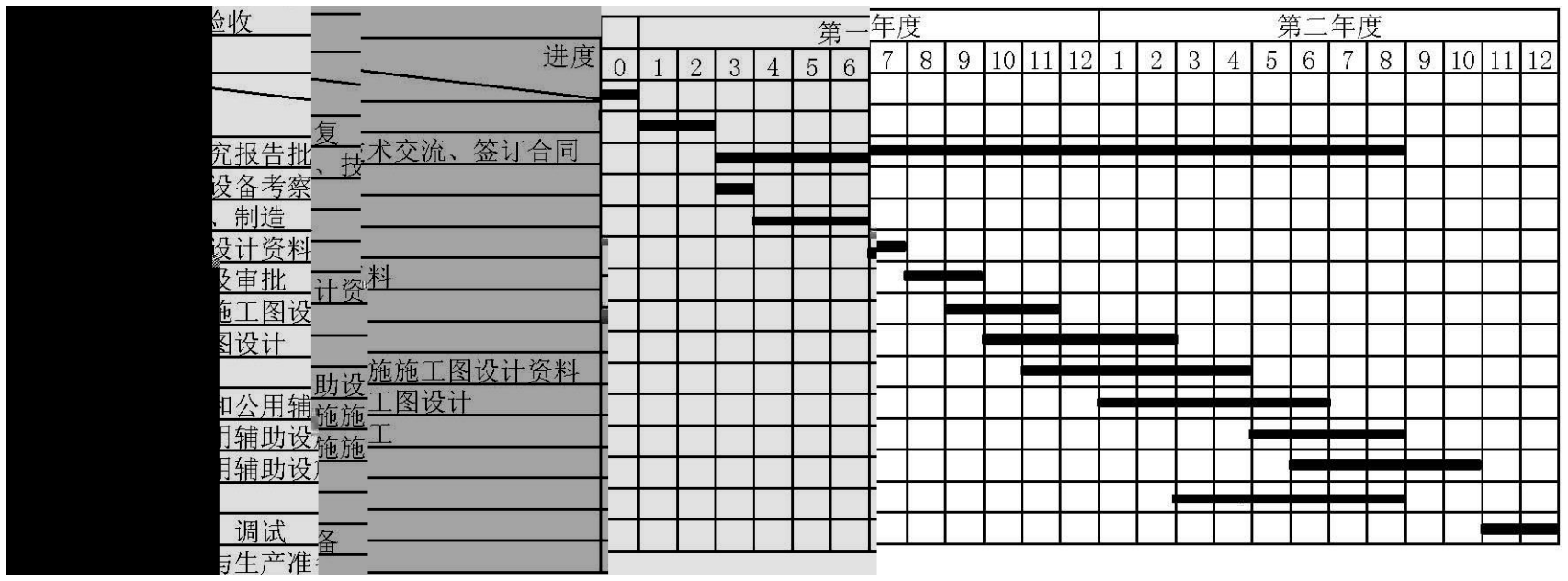
12. 5

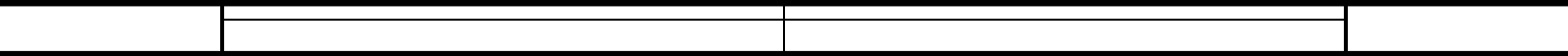
2014

2015

2

1

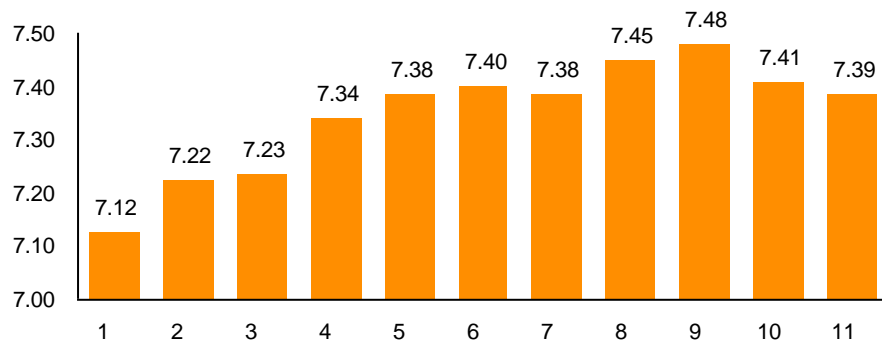




6

2

8,476



3

	2016	9	30		5.9
5.88			1.47		1.05
3,000				33.53%	

4

2012 12

2016 9 30

1.47

5

2015 10 28

6

--	--	--	--	--

7

1

3 -

o

2

))([2015]31)
